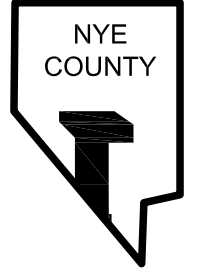
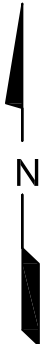
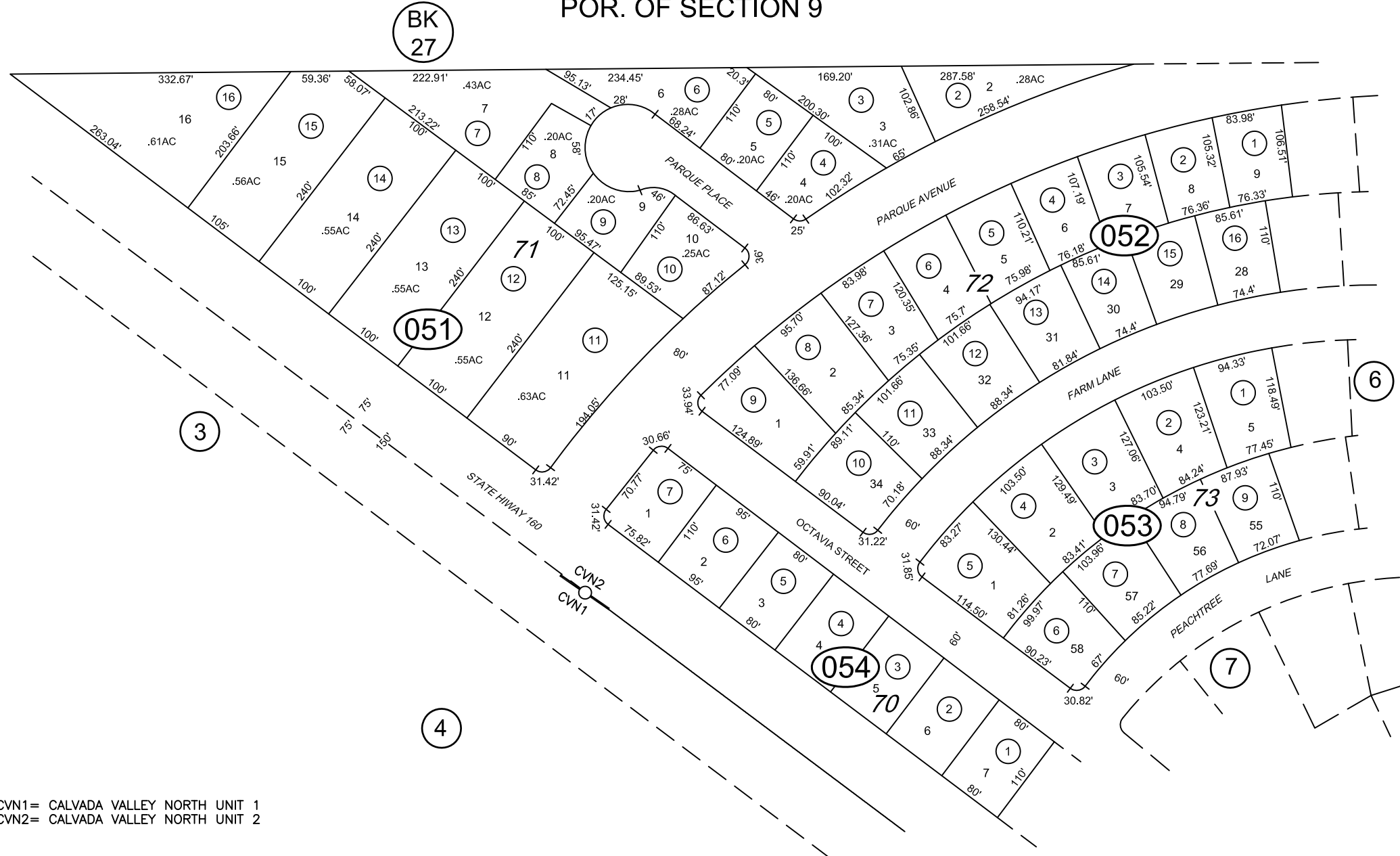


T.19S., R.53E.
POR. OF SECTION 9

30-05



REV. 03-30-94
05-10-96
07-25-05
04-14-16



CVN1= CALVADA VALLEY NORTH UNIT 1
CVN2= CALVADA VALLEY NORTH UNIT 2

FEB81/WB
CAD FILE 04/14/16-BF
NYE COUNTY ASSESSOR

NOTE: THIS PLAT IS FOR ASSESSMENT USE ONLY AND
DOES NOT REPRESENT A SURVEY. NO LIABILITY IS
ASSUMED AS TO THE ACCURACY OF THE DATA
DELINEATED HEREON.

UNIT 2
CALVADA VALLEY NORTH