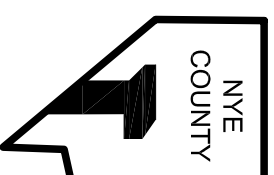
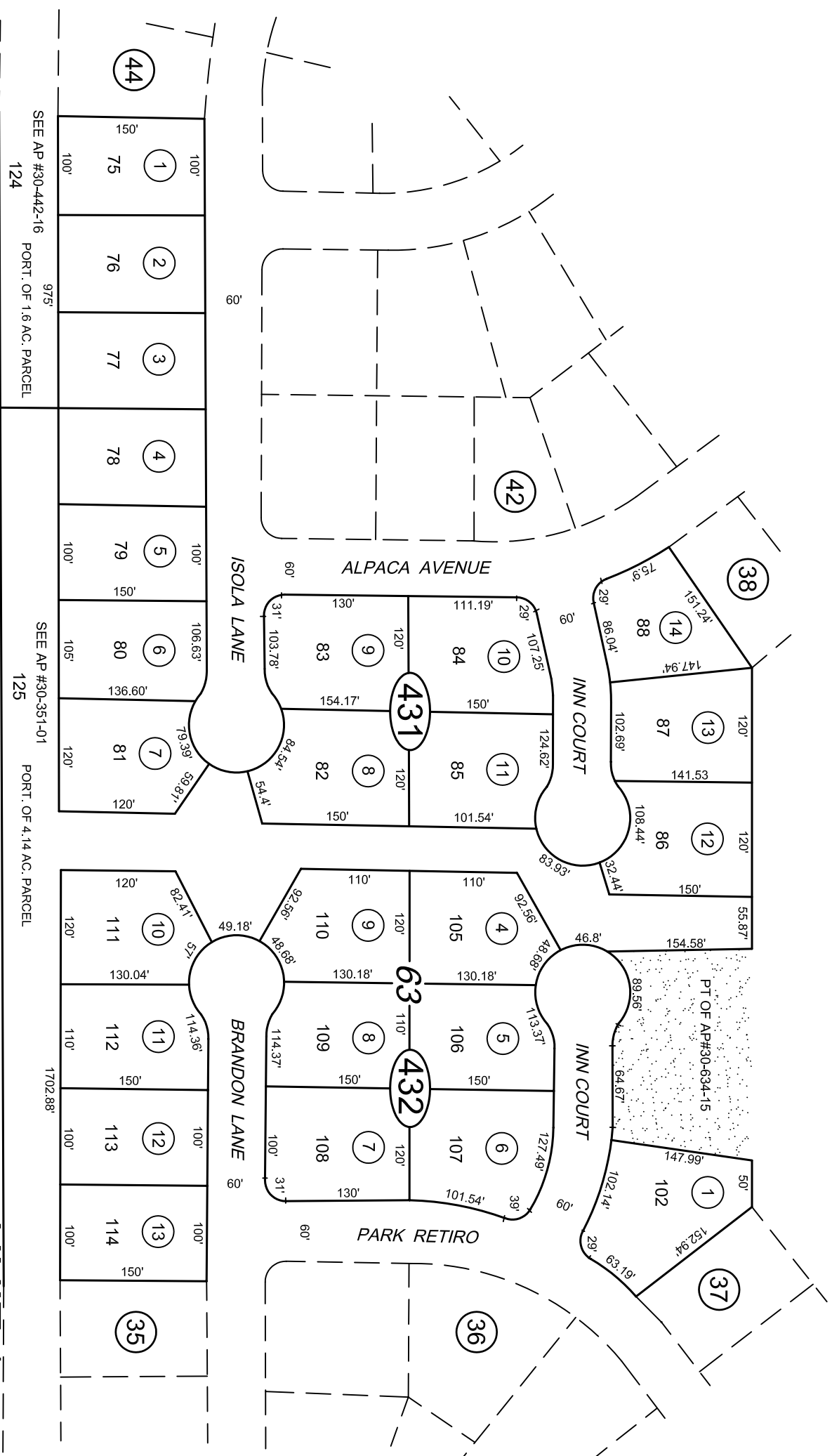


T.19S., R.53E.
 POR. OF SECTION 9

30-43



REV. 02-10-87
 05-13-96
 12-16-04



SEE AP #30-442-16
 124

SEE AP #30-351-01
 125

MAR.81/WTB-bjb
 CAD FILE 11-05-01/CM
 NYE COUNTY ASSESSOR

NOTE: THIS PLAT IS FOR ASSESSMENT USE ONLY AND
 DOES NOT REPRESENT A SURVEY. NO LIABILITY IS
 ASSUMED AS TO THE ACCURACY OF THE DATA
 DELINEATED HEREON.

BK
 32

UNIT 1

CALVADA VALLEY NORTH