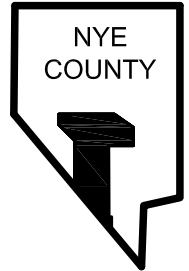
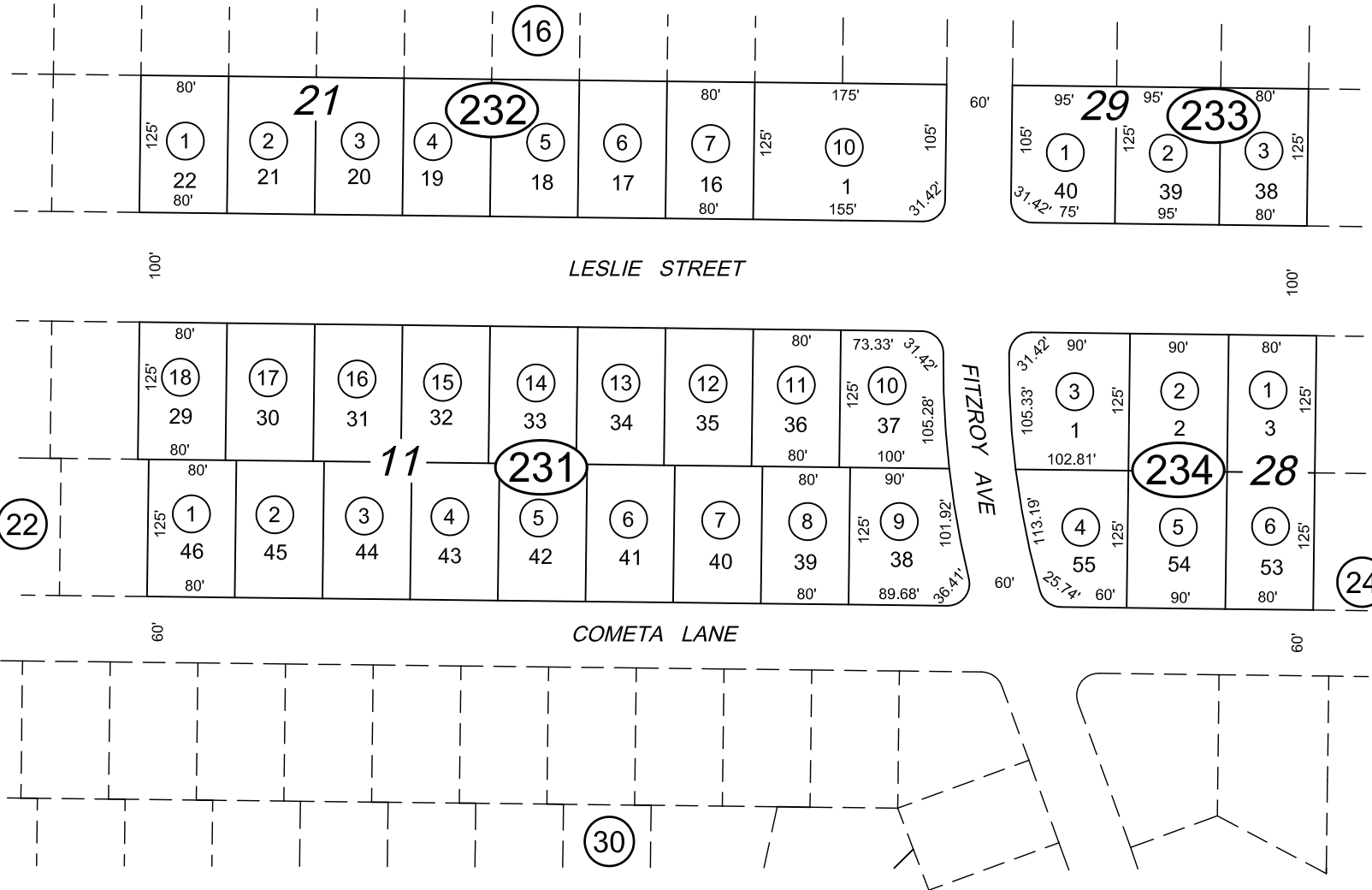


T.19S., R.53E.
 POR. OF SECTIONS 8 & 17

31-23



REV. 05-08-96
 11-01-11



OCT-80/WB cks
 CAD FILE 11-01-11/DO
 NYE COUNTY ASSESSOR

NOTE: THIS PLAT IS FOR ASSESSMENT USE ONLY AND
 DOES NOT REPRESENT A SURVEY. NO LIABILITY IS
 ASSUMED AS TO THE ACCURACY OF THE DATA
 DELINEATED HEREON.

CALVADA VALLEY NORTH
 UNIT 3