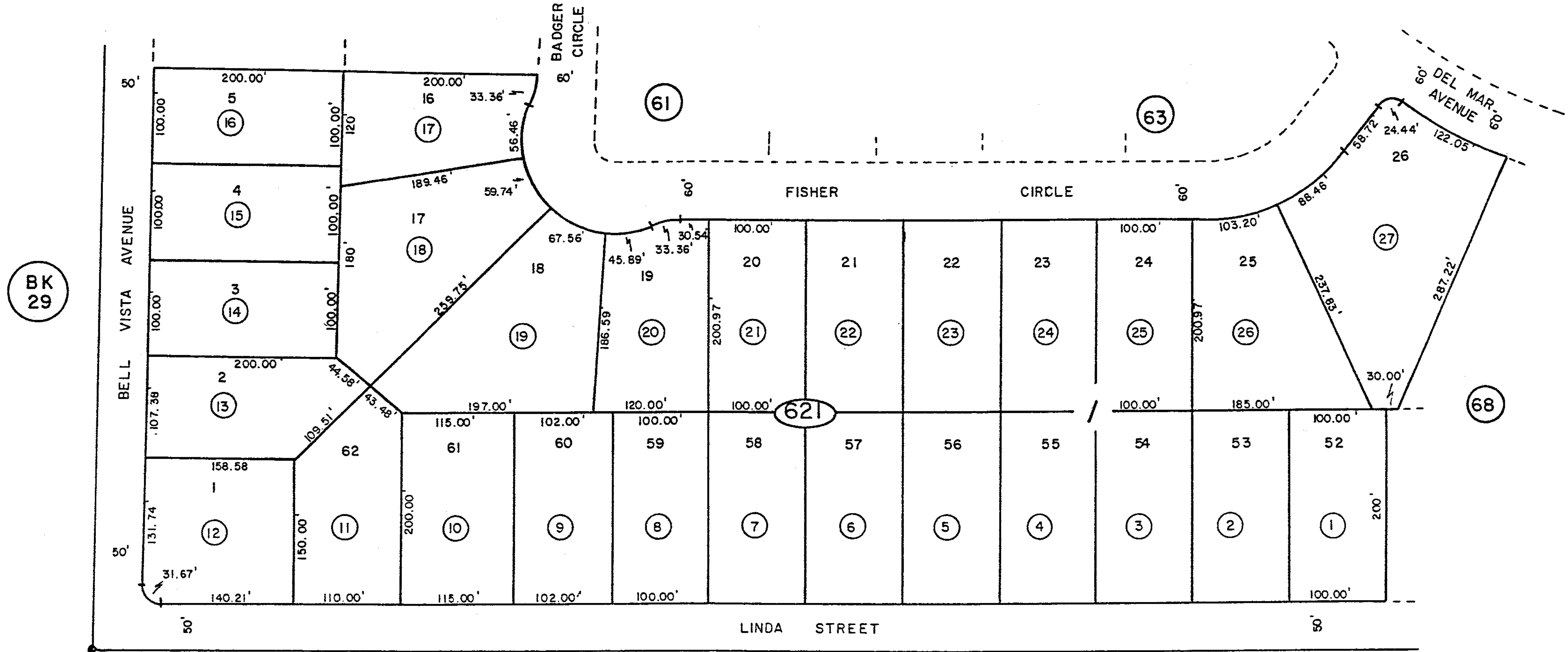


T. 19 S., R. 53 E.
POR. SEC. 33

33-62
REV. 7-3-76

1" = 100'



BK
29

BK
29

UNIT 1
CALVADA MEADOWS

Nye County

NOTE: This plat is for assessment use only and does not represent a survey. No liability is assumed as to the accuracy of the data delineated hereon.