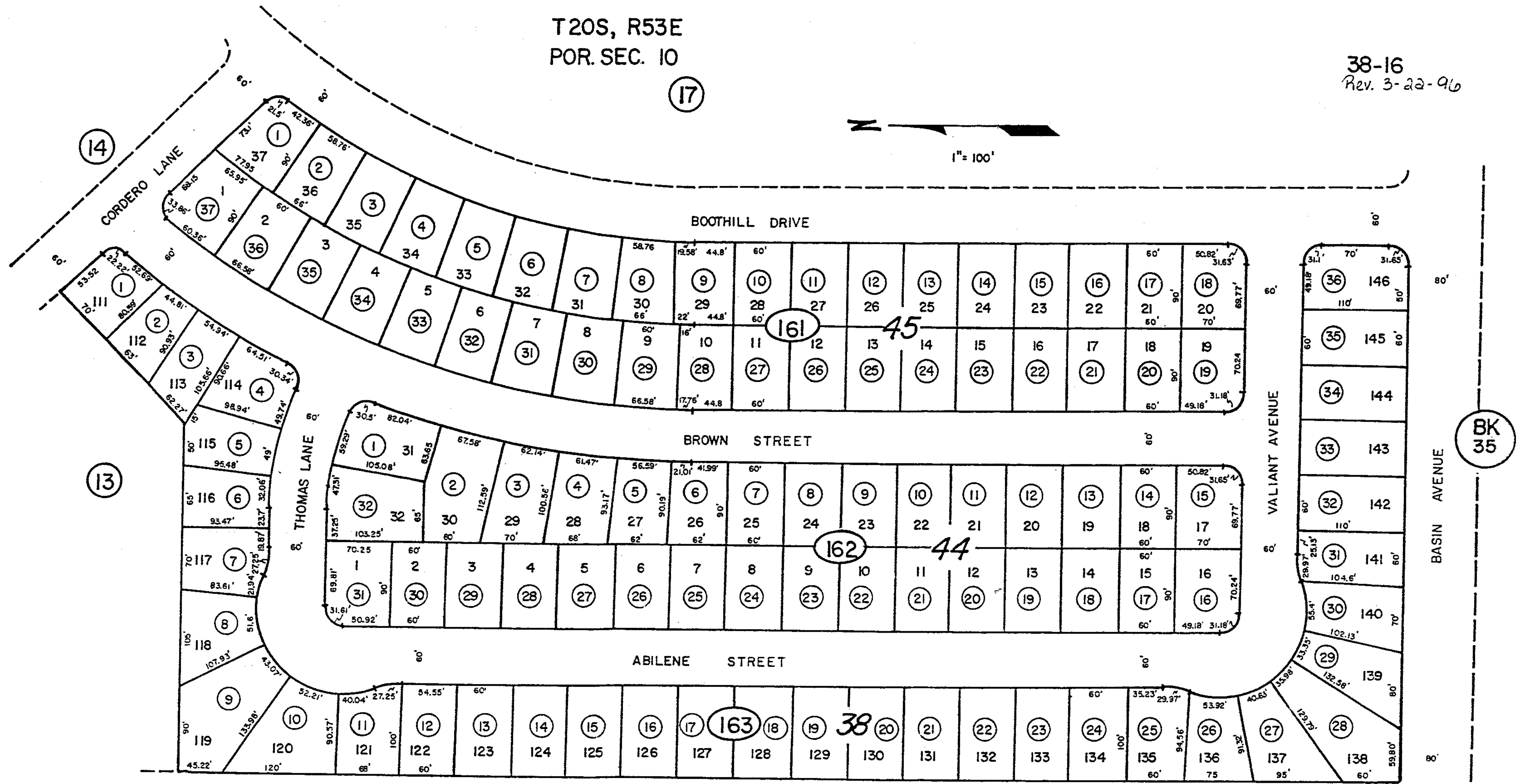


T20S, R53E
POR. SEC. 10

38-16
Rev. 3-22-96



UNIT 11
CALVADA VALLEY

BK
35

Nye County

NOTE: This plat is for assessment use only and does not represent a survey. No liability is assumed as to the accuracy of the data delineated hereon.

JAN 81/JLB
NYE CO. ASSESSOR