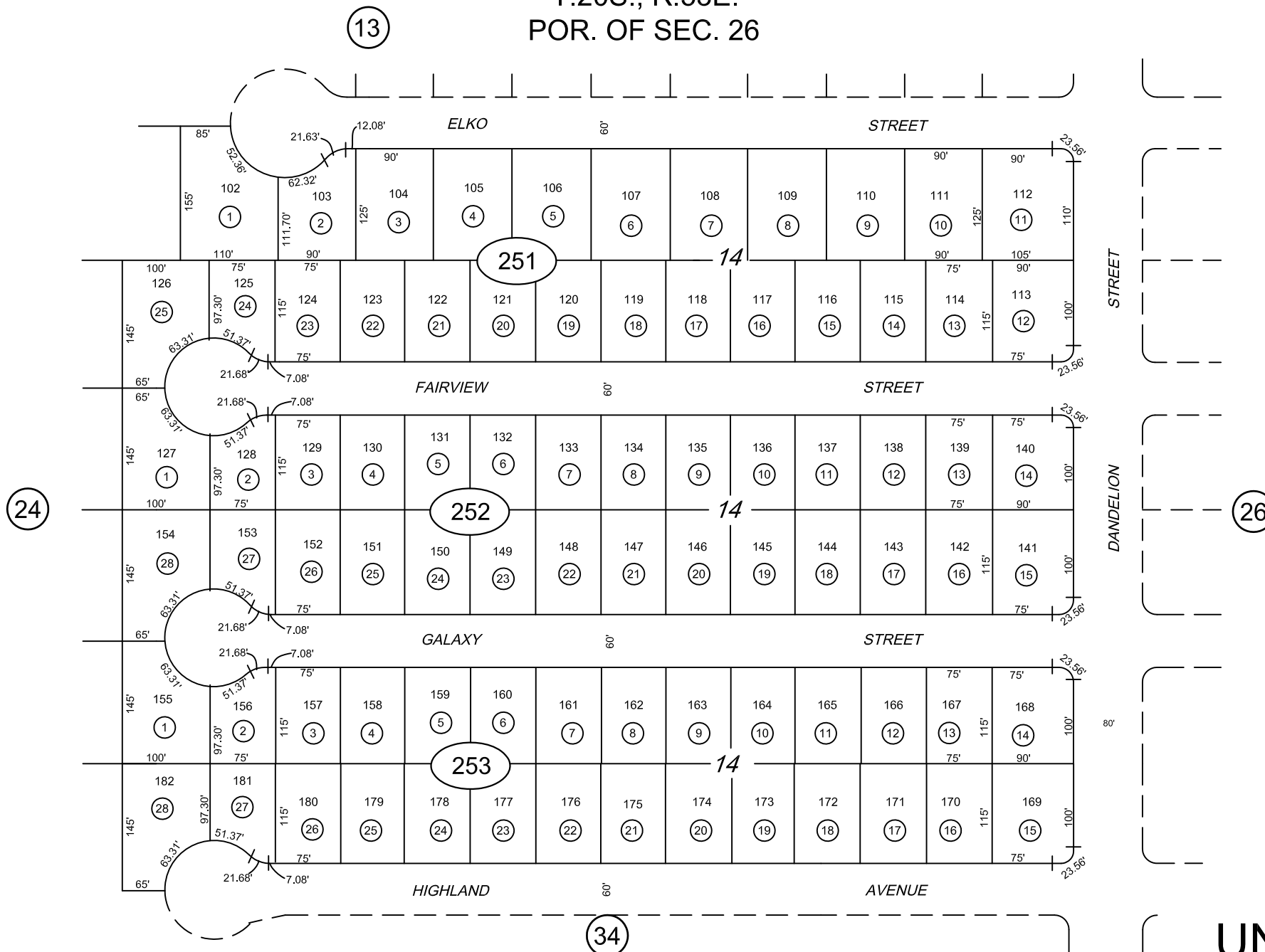


T.20S., R.53E.
 POR. OF SEC. 26

42-25



REV. 03-03-16



UNIT 3
 CALVADA VALLEY

JAN. 81/JM
 CAD FILE 03-29-16/BF
 NYE COUNTY ASSESSOR

NOTE: THIS PLAT IS FOR ASSESSMENT USE ONLY AND
 DOES NOT REPRESENT A SURVEY. NO LIABILITY IS
 ASSUMED AS TO THE ACCURACY OF THE DATA
 DELINEATED HEREON.