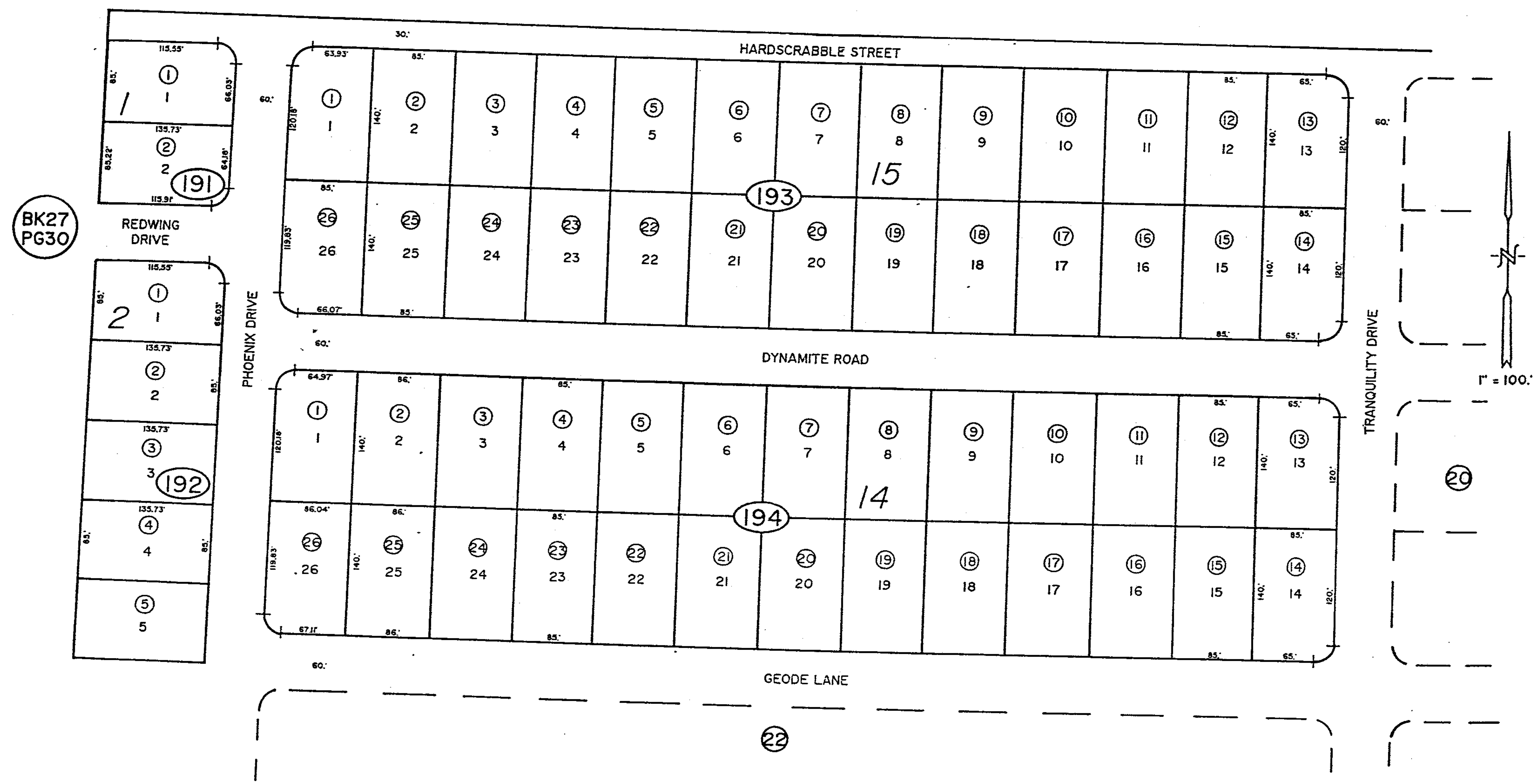


T19S, R53E,
POR. OF SEC. 14

BK27
PG30

43-19



BK27
PG30

APR.97/NMT
NYE CO. ASSESSOR

Nye County
NOTE: This plat is for assessment use only and does not represent a survey. No liability is assumed as to the accuracy of the data delineated hereon.

CALVADA MEADOWS UNIT 4
FILE MAP #411499